

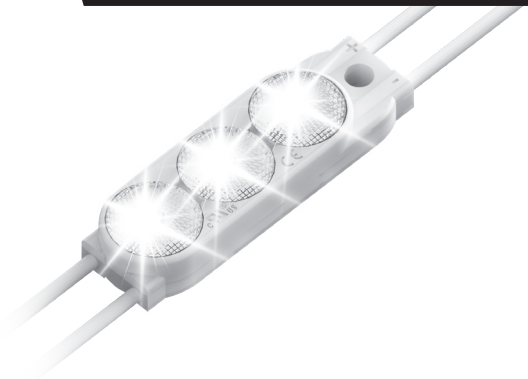
# SloanLED Prism Mini

Advanced optics for even illumination in small channel letters

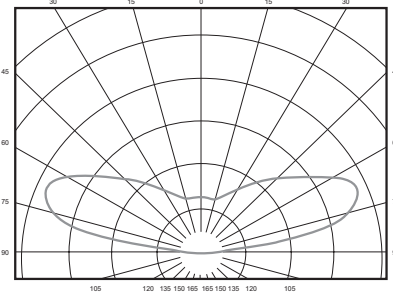
PERFORMANCE SERIES

## Specifications

<b>Part number</b> .....	<b>Whites</b>
7100 K.....	701269-7WMJ2-MB
6500 K.....	701269-6WMJ2-MB
5000 K.....	701269-5WMJ2-MB
4000 K.....	701269-4WMJ2-MB
3000 K.....	701269-3WMJ2-MB
	<b>Colors</b>
Red (624 nm) .....	701269-RDMJ2-MB
Green (535 nm).....	701269-GRMJ2-MB
Blue (470 nm) .....	701269-BLMJ2-MB
<b>Dimensions L x W x H</b> .....	48 mm x 14 mm x 11 mm (1.88 in x 0.55 in x 0.43 in)
<b>LEDs per module</b> .....	3
<b>Modules per meter/foot</b> .....	6.6/2.0
<b>Optimal can depth</b> .....	50-100 mm (2-4")
<b>Operating temperature</b> .....	-40° C to +70° C
<b>Protection class</b> .....	IP66 & IP68*
<b>Binning</b> .....	MacAdam Step 3
<b>Power per module</b> .....	<b>Whites</b>
7100 K, 6500 K, .....	0.43 W
5000 K, 4000 K, 3000 K	
	<b>Colors</b>
Red, Green, Blue .....	0.30 W
<b>Efficacy</b> .....	<b>Whites</b>
7100 K, 6500 K, 5000 K ..	116 lm/W
4000 K, 3000 K .....	105 lm/W
	<b>Colors</b>
Red.....	40 lm/W
Green .....	100 lm/W
Blue.....	27 lm/W
<b>Life rating</b> .....	>60,000 hours
<b>Fastening</b> .....	Peel-n-stick and mechanical
<b>Power capacity</b> .....	<b>Whites</b>
	136 modules (20.7 m / 68.0 ft) per SloanLED 60 W 12 VDC power supply
	<b>Colors</b>
	180 modules (27.4 m / 90.0 ft) per SloanLED 60 W 12 VDC power supply
<b>Packaging</b> .....	14.6 m / 48.0 ft (96 modules) per bag, 5 bags per carton
<b>Lumens</b> .....	<b>Whites</b>
7100 K, 6500 K, 5000 K ..	50
4000 K, 3000 K .....	45
	<b>Colors</b>
Red.....	12
Green .....	30
Blue.....	8



## Luminous Intensity Distribution



## Power Supply Capacity

12 VDC Power supply†	SloanLED Prism Mini (7100 K, 6500 K, 5000 K, 4000 K, 3000 K)	SloanLED Prism Mini (Red, Green, Blue)
<b>Modules per meter/foot</b>	6.6 / 2.0	6.6 / 2.0
25 W Power Supply	8.5 m (28.0 ft) / 56 mods	11.4 m (37.5 ft) / 75 mods
60 W Power Supply	20.7 m (68.0 ft) / 136 mods	27.4 m (90.0 ft) / 180 mods
120 W Power Supply	2 x 20.7 m (68.0 ft) / 136 mods	2 x 27.4 m (90.0 ft) / 180 mods
Power per meter (foot) in watts	2.60 (0.79) W	1.97 (0.60) W

\* Prism IP68 test parameters are 1.3 m submersion for 30 minutes. Do not mount in submerged application or where module will be directly exposed to prolonged flowing or dripping water.  
† Configured for Class 2 Output.

SloanLED channel letter products are covered by US and foreign patents pending and covered by one or more of the following US patents issued: 6,932,495, 7,160,140, 7,241,031, 7,520,771, 7,931,386 and European Patent No. 1756471.

# SloanLED Prism Mini

Advanced optics for even illumination  
in small channel letters

## Density Guidelines

Module color	Can Depth	Modules per meter	Milimeters on center standard face	Milimeters on center dark vinyl	Milimeters on center perforated vinyl	Watts per module	Modules per M <sup>2</sup> standard face	Modules per M <sup>2</sup> dark vinyl
White - 6500 K	50 mm	10	90	65	40	0.42	111.1	153.8
	75 mm		125	100	75		80.0	100.0
	90 mm	6.5	160	135	110		40.6	48.1
	100 mm		200	175	150		32.5	37.1
	125 mm		230	205	180		28.3	31.7

### Notes:

- It is recommended that you first test LED density in sample letter/cabinet to evaluate brightness, uniformity and color.
- Should you have questions or require assistance in testing, please contact your SloanLED customer service representative.
- For multiple rows, calculate half of the row spacing given from the table and start first row offset that distance from return.
- Products can be used in can depths deeper or shallower than listed above, but testing is recommended.
- Based on European face materials.
- Maximum single row coverage is (Milimeters on center with standard face) × 1.25.

These guidelines are intended to provide only an approximation of product required for your sign, assuming an optimal balance of performance and cost. SloanLED is not responsible for the actual results based on the use of these guidelines.



Use the online SloanLED Layout Estimator to get a quick design and material estimate for your sign.  
**Visit product page for details.**

**SloanLED Headquarters**  
805.676.3200 • info@SloanLED.com

**SloanLED Europe b.v.**  
+31 88 12 44 900 • Europe@SloanLED.com



**SloanLED.com**

© 2020 SloanLED Rev E 2020-02-12



**Visit product page for details.**

Specifications subject to change without notice.

