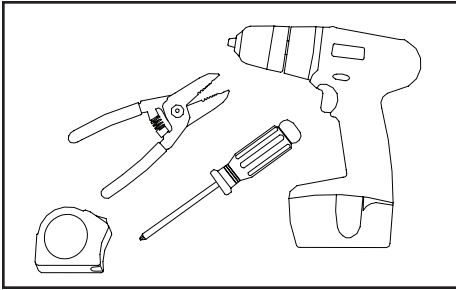
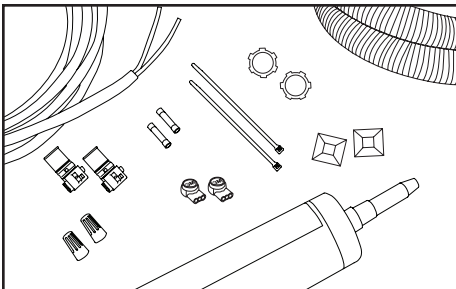


Installation Guide for 701946-6WLRP1, -6WSRP1



Recommended tools:

1. Measuring tape
2. Wire strippers
3. Drill
4. Screwdriver



Recommended supplies:

1. UL Listed 18 AWG (1 mm²), 2 conductor, PVC jacketed, NEC type PLTC cable (can be purchased from SloanLED® in 100-foot (30,48-meter) rolls)
2. Cable tie downs (plastic with double-sided tape for mounting)
3. 4 in (101,6 mm) nylon zip ties
4. UL Listed wire nuts (IDEAL P/N #30-072 Blue) or appropriate UL Listed electrical connectors
5. Conduit and conduit connectors (water tight if necessary)
6. ½ in (13 mm) electrical locknuts
7. #8 (M4) pan head sheet metal screws or 5/32 in (4 mm) aluminum rivets
8. Double-stick tape and/or silicone (optional)

CAUTION: Turn off power to sign before inspecting or removing existing light source. Power must remain off while installing LED product.

ATTENTION : Coupez l'alimentation générale du panneau avant d'intervenir ou de retirer la source lumineuse existante. L'alimentation générale doit être coupée tout au long de l'installation du kit de remplacement en LED.

NOTE: All materials removed must be disposed of in accordance with applicable local, state, and federal laws.

WARNING check polarity: All connections must be RED-TO-RED (+) and BLACK-TO-BLACK (-). Reverse polarity connections may damage the LEDs and will void product warranty.

Retrofit Installation

Scope: This procedure is designed to aid in the installation of SloanLED's PosterBOX™ 3 illumination product and power supply products. Skilled tradespeople familiar with general construction, electrical, and sign installation techniques should do the installation. Licensed electricians should provide all installation and hook-up of both the primary and secondary input/outputs of the power supply. All installation and hook-up should be done in accordance with all National and Local codes and permits. In no way is this document intended to construe warranty or fitness of use of the products described, nor is it intended to provide safety instruction for those installing the product.

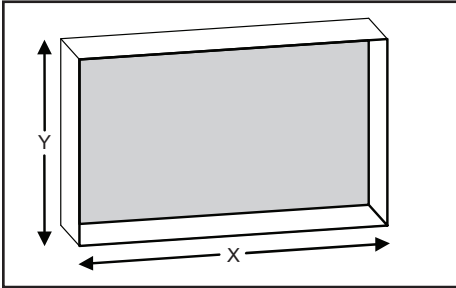
The field installation of this LED retrofit kit into a sectional sign is subject to the acceptance of local inspection authority. The UL Classification mark on this LED retrofit kit requires the kit to be installed in a UL Listed sign only.

Remove Existing Lighting Products

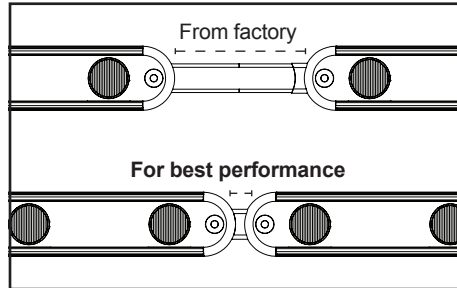
1. Make sure power is off. Have a licensed electrician disconnect and remove all ballasts.
2. Remove existing lighting products.
3. Any existing holes in the sign that will not be used for the new installation should be patched to avoid water damage. Openings smaller than ½ in (13 mm) in diameter may be sealed with silicone. Openings larger than ½ in (13 mm) in diameter require a metal patch secured by screws or rivets and sealed with silicone. **Continue with step 1 of new installation.**

Installation Guide for 701946-6WLRP1, -6WSRP1

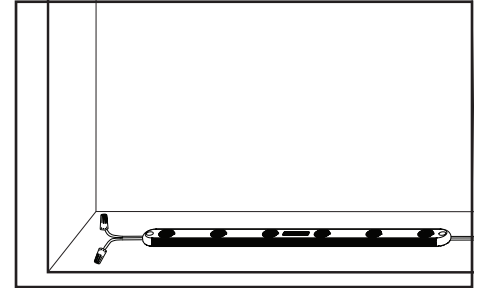
New Installation



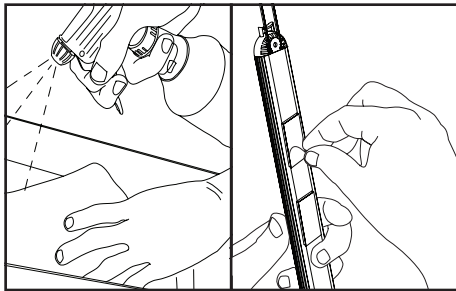
1. Measure sign box to determine quantities of PosterBOX 3 (see Power Supply capacity table on page 3).



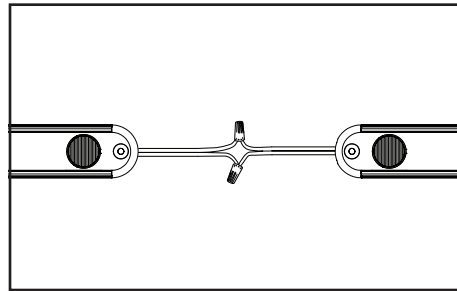
TIP: For best results, space modules adjacent to each other using module spacer. For best performance in a single-sided box, mount modules on returns, flush against rear wall of box. For a double-sided sign box, mount modules in center of returns.



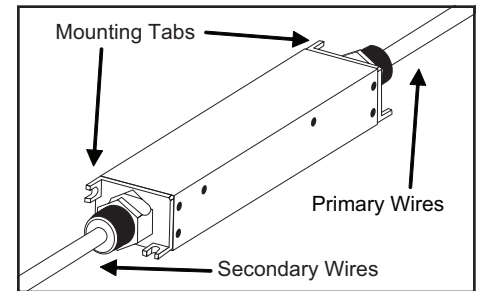
2. Secure modules to sides of sign box using #8 (M4) pan head sheet metal screws or 5/32 in (4 mm) aluminum rivets.



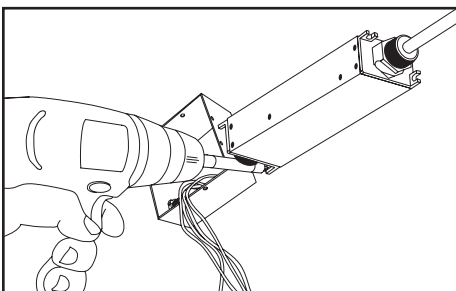
3. **Optional Peel and Stick:** If desired, double-stick tape (not provided) can be used to mount modules. Clean bottom of module with rubbing alcohol and allow to dry. Adhere tape to module. Before mounting modules, clean mounting surfaces inside of sign box with rubbing alcohol for proper tape adhesion.



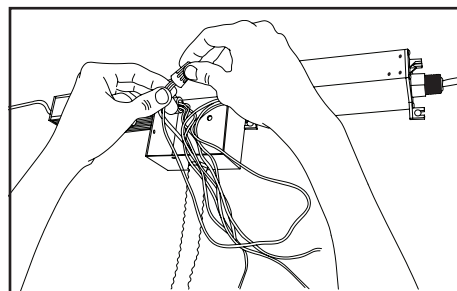
4. **Connections:** Modules may be connected in series or parallel. Modules should not be looped to create a closed circuit. Cap all unused, exposed wire ends.



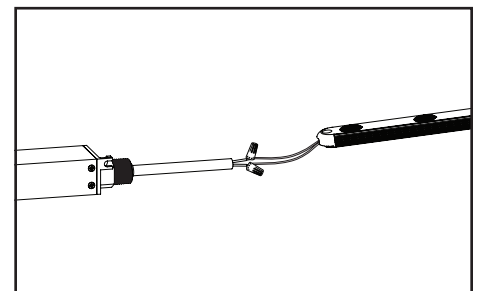
5. **Mount Power Supply:** Identify primary wires, secondary wires, and location of mounting tabs.



6. Units may be mounted in any orientation using mounting tabs.



7. **Connect primary: CAUTION!** Have a licensed electrician connect primary.

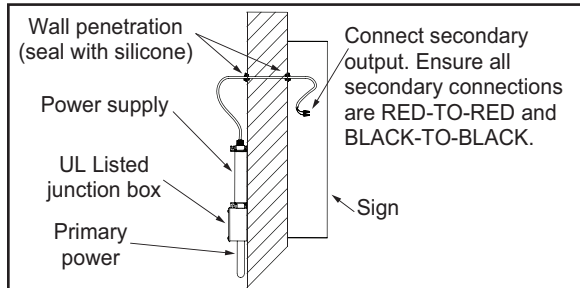


8. **Connect to power supply:** Using UL Listed electrical connectors, daisy chain product as required and connect to power supply.

Installation Guide for 701946-6WLRP1, -6WSRP1

Layout Guidelines

It's recommended to test LED density in a sample cabinet to evaluate brightness, uniformity, and color. If you have questions or require assistance in testing, please contact your SloanLED Customer Service Representative.



Secondary class 2 cables do not require conduit per NEC 2014 Articles 725.121 through 725.135. Seal all sign and wall penetrations with silicone to avoid water damage.

100 W 24 VDC Power Supply Capacity Table for PosterBOX 3

Part Number	Input		Output		Maximum Units per Power Supply*	
	Nominal Input Voltage	Input Current	Power Output	Output Current	6WLRP1	6WSRP1
701895-24C	100-240 V	1.4 A	100 W	4.2 A	6	12
Capacities based on 90% of power supply output			Power used per unit in Watts:		14.0 W	7.3 W

*Combination of units must not exceed maximum power supply output.

NOTE: PosterBOX 3 is not dimming compatible.

Extension of Power Supply Leads

If longer lead wire from power supply to LED product is needed, an extension can be used. Extension should be kept as short as possible, i.e., under 15 ft use 18 AWG UL Listed PLTC (4,6 m for 1 mm² PLTC) or under 50 ft use 14 AWG UL Listed PLTC (15,2 m for 2,5 mm² PLTC).

Troubleshooting

Entire box/cabinet or product does not light after complete installation.	Check connection from power supply lead to first lamp. Make sure polarity of connections made at the power supply lead and any jumper wire is correct. Power supply outputs should be connected RED-TO-RED (+) and BLACK-TO-BLACK (-).
Still does not light.	Check output voltage of power supply using a voltmeter. The output voltage should be DC 24.0 V ± 0.5 V. If there is no output voltage, have a licensed electrician check input voltage. Make sure power supply is connected correctly and getting primary power. If power supply is connected properly and getting primary power and there is still no output voltage, try a different power supply.
Still does not light.	If power supply is getting primary power and lamps don't light, there may be a short in the secondary wiring. Check all connections and cap all loose wires.
The beginning of a lamp lights, but the entire lamp does not light or lights intermittently.	The primary cause of a portion of a lamp not lighting or lighting intermittently is a bad connection or reverse polarity connection between lamps that light and lamps that don't light. Check this connection.
One lamp does not light, but all others in the cabinet light.	PosterBOX 3 is designed so if one lamp fails, it will not cause the entire box/cabinet to go out. If one lamp does not light, but all others do, replace this lamp with a new one.



PosterBOX 3 is covered by CN200680037992.9, EP0890059, EP06812715.8, JP08-535482, NL1030161C2, US12089720 and patents pending.

Green Signage

Customer service and technical support
888.747.4LED (888.747.4533)
SloanLED.com • info@SloanLED.com

Europe: Customer service and technical support
+31 88 12 44 900
SloanLED.com • Europe@SloanLED.com

