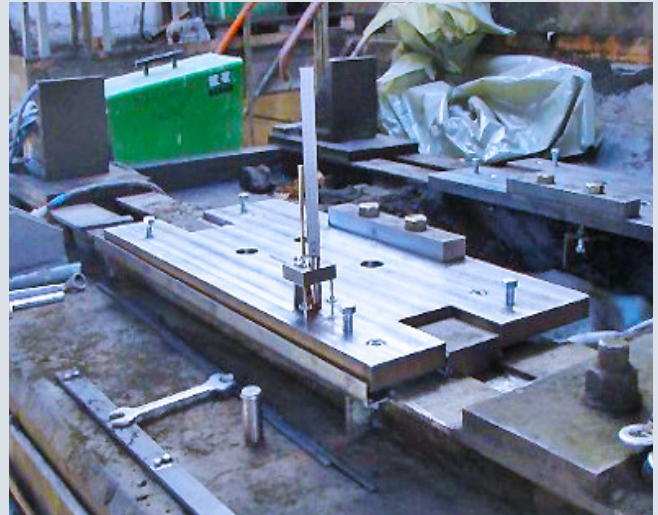


polysius® kiln bearing replacement



Removal of the old roller units and cleaning of the existing baseplate. No work is required on the baseplate or the kiln foundation.



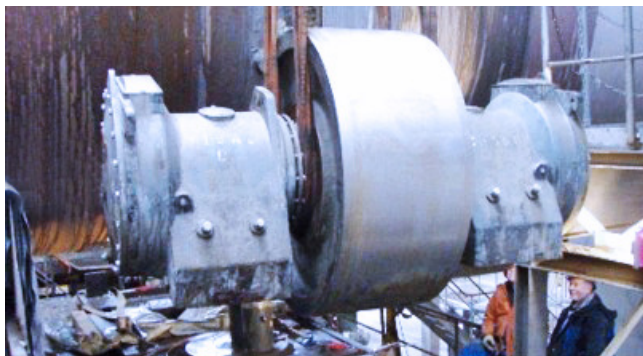
Alignment of the adapter plate. After being aligned, the adaptor plate is grouted with a special grouting compound.

Simple bearing replacement, designed for easy mounting

With the new polysius® concept, roller stations can be modified to the globally proven polysius® roller stations irrespective of the rotary kiln make – particularly for problems with hot bearings or broken axles at rotary kiln roller stations.

Design and functionality

To support the rotary kiln, each roller station requires two supporting rollers with the respective supporting roller bearings plus the associated baseplates.



Easy mounting of the new pre-assembled polysius® roller unit onto the adapter plates.

The roller station is supported on the kiln foundation by the baseplate, which is usually an integral part of the kiln foundation. Replacing the baseplate is time-consuming and costly.

The new service concept combines the world-renowned and well-proven polysius® roller station with quick installation in such a way that the existing baseplate arrangement can still be used. The connection between the new roller station and the existing baseplate is achieved by means of an adapter plate.

Your service advantages

- Customer's existing baseplates can still be used; the concept can be adapted to any baseplate
- Shortest possible installation time with low installation costs
- No costly and time-consuming foundation modifications required
- Quick and easy installation
- High operational reliability confirmed through references