

# STACBOND

SPECIAL  
FINISHES



[stacbond.com](http://stacbond.com)

Aluminium Coil Coating & Composite Panels

# STACBOND

## Fire Resistant Aluminum Composite panel

**[EN]** The STACBOND composite panel consists of a fire-resistant core and two sheets of 5005/3005 aluminium alloy, coated with the highest quality paint for superior resistance to ageing.

Its versatility allows for various machining techniques, such as milling, bending or punching, which expand creative and design options, making it a safe, durable and flexible solution for façades, cladding and interiors.

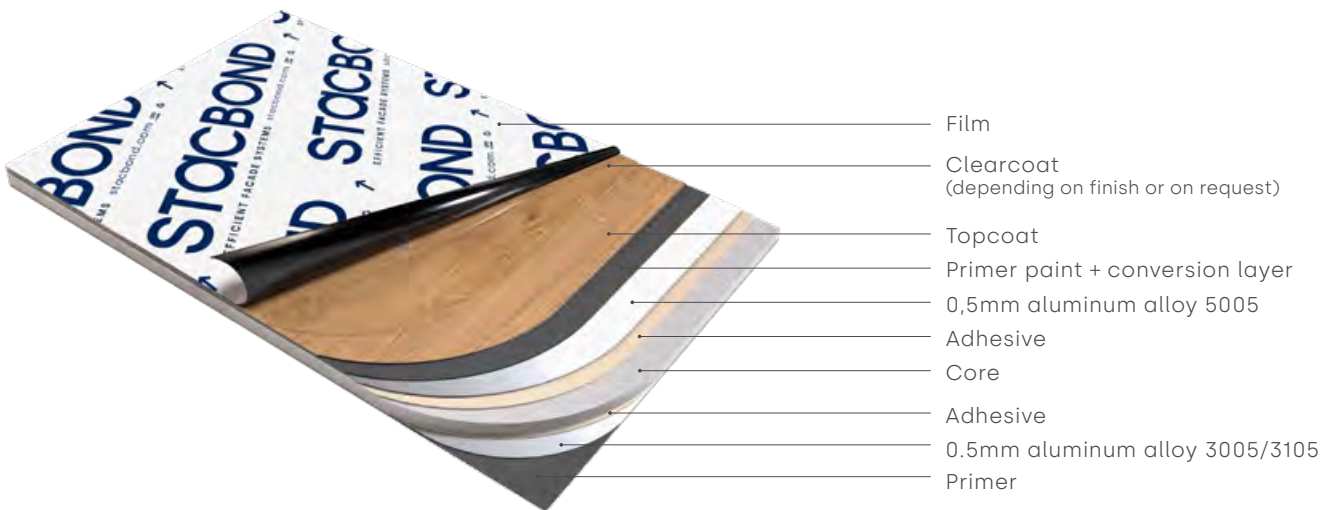
**[ES]** El panel composite STACBOND, está formado por un núcleo resistente al fuego y dos láminas de aluminio de aleación 5005/3005, recubiertas con pintura de la máxima calidad para una resistencia superior al envejecimiento.

Su versatilidad permite diversas técnicas de mecanizado, como fresado, curvado o punzonado que amplían las opciones creativas y de diseño, convirtiéndolo en una solución segura, duradera y flexible para fachadas, revestimientos e interiores.

**[FR]** Le panneau composite STACBOND est composé d'un noyau résistant au feu et de deux feuilles d'aluminium en alliage 5005/3005, recouvertes d'une peinture de la plus haute qualité pour une résistance supérieure au vieillissement.

Sa polyvalence permet diverses techniques d'usinage, telles que le fraisage, le cintrage ou le poinçonnage, qui élargissent les options créatives et de conception, ce qui en fait une solution sûre, durable et flexible pour les façades, les revêtements et les intérieurs.

**[DE]** Die STACBOND-Verbundplatte besteht aus einem nicht brennbaren Kern und zwei Aluminiumschichten, welche aus einer Legierung 5005/3005 bestehen, diese ist mit hochwertiger Farbe beschichtet, welche eine hervorragende Alterungsbeständigkeit gewährleistet. Seine Vielseitigkeit ermöglicht verschiedene Bearbeitungstechniken wie Fräsen, Biegen oder Stanzen, die die kreativen und gestalterischen Optionen erweitern und es zu einer sicheren, langlebigen und flexiblen Lösung für Fassaden, Verkleidungen und Innenräume macht.

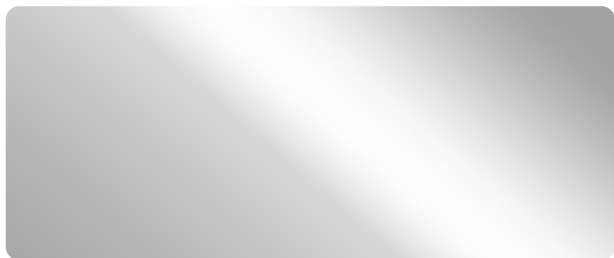


### Environmental certificates

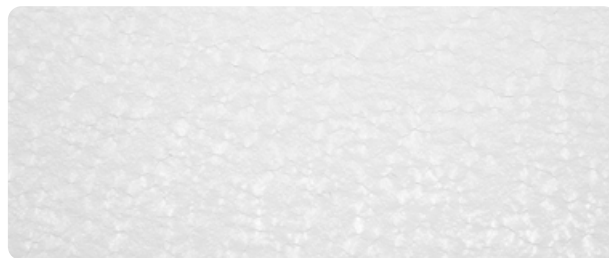
COUNTRY	NORM / CERTIFICATE	BODY	STACBOND A2	STACBOND FR
INTERNATIONAL	EPD S-P-01289	Environdec Sweden	✓	✓
INTERNATIONAL	LEED 2014	USGBC	✓	✓
INTERNATIONAL	ISO 14001	Bureau Veritas	✓	✓
INTERNATIONAL	ZERO WASTE	Bureau Veritas	✓	✓



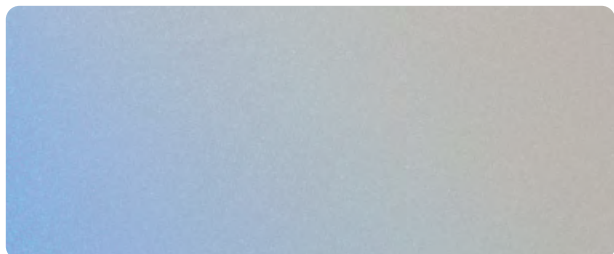
## Special finishes



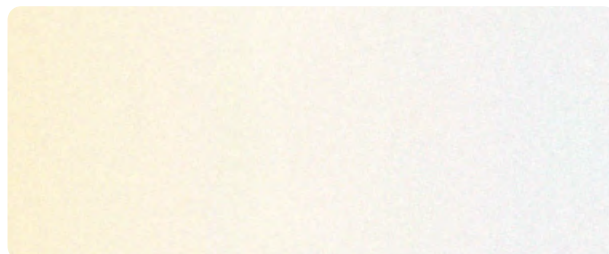
**Natural Mirror**  
STB-M01



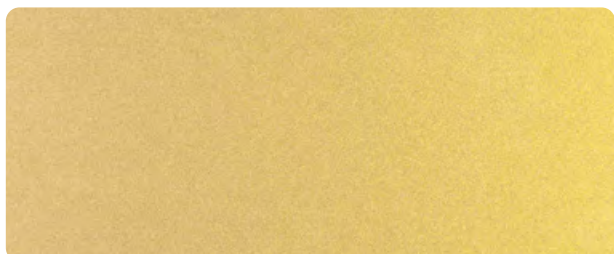
**Textured White**  
STB-4C3



**Stellar Blue**  
STB-S12



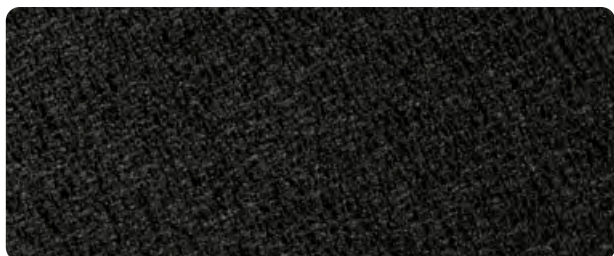
**Golden Pearl**  
STB-S10



**Golden Sand**  
STB-4D8



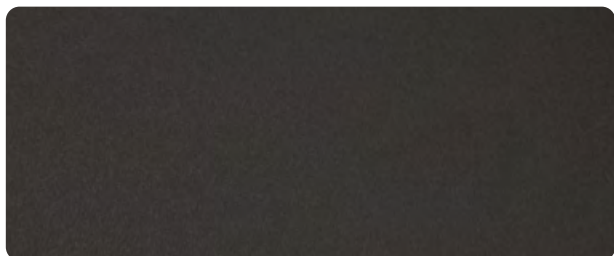
**Sunset**  
STB-S08



**Rugged Black**  
STB-4E9



**High Gloss Black**  
STB-4F1



**Grain Anthracite**  
STB-4D5

Need a color match?  
contact us at [stacbond.com](https://stacbond.com)

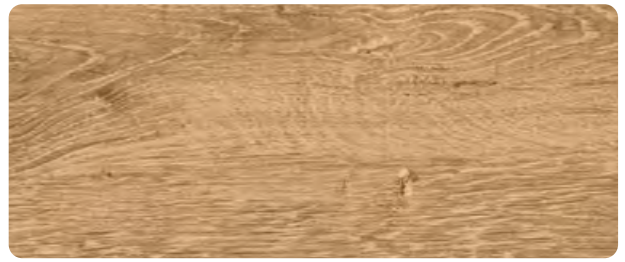
## Wood finishes

---



**Straw Chestnut Sense**

STB-W45



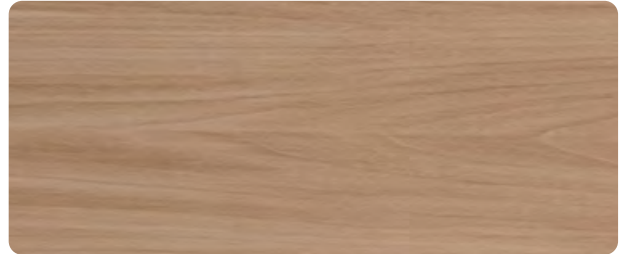
**Bark Chestnut Sense**

STB-W58



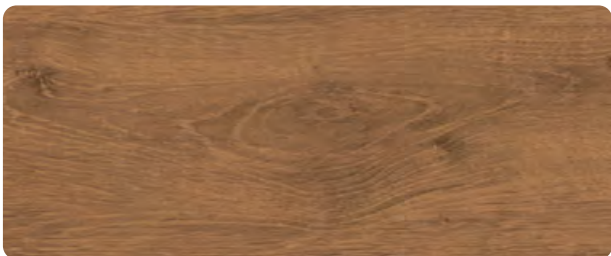
**Linen Chestnut Sense**

STB-W46



**Natural Oak Sense**

STB-W49



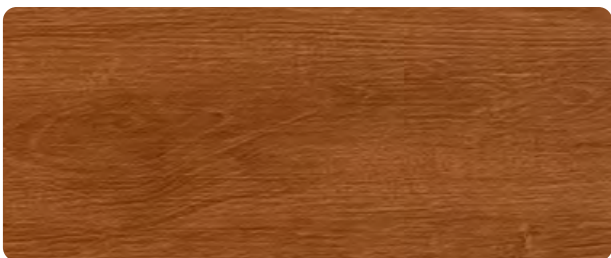
**Natural Chestnut Sense**

STB-W47



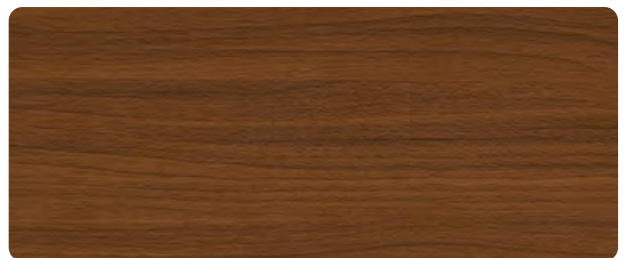
**Mountain Oak Sense**

STB-W50



**Autumn Chestnut Sense**

STB-W48



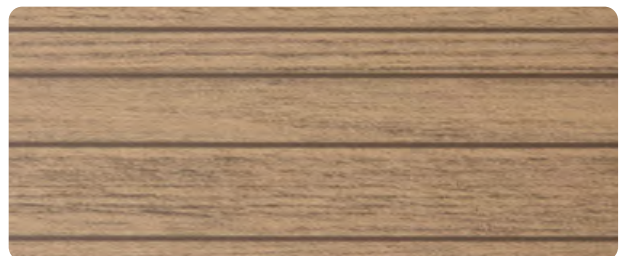
**Mocha Oak Sense**

STB-W52



**Wood Strip Sense**

STB-W61 [NEW]



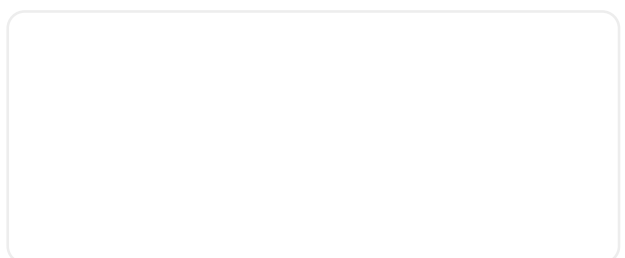
**Wood Town Sense**

STB-W60 [NEW]



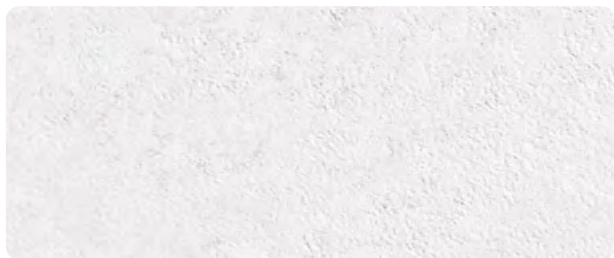
**White Wood Sense**

STB-U41 [NEW]

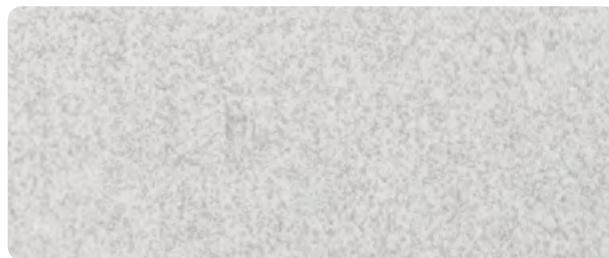


## Mineral finishes

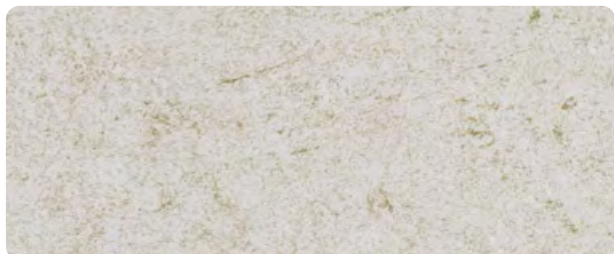
---



**Fira Sense**  
STB-R01 [NEW]



**Megara Sense**  
STB-R03 [NEW]



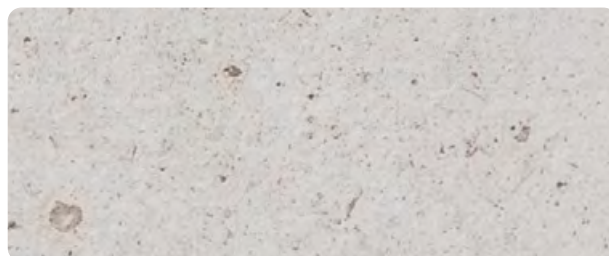
**Turia Sense**  
STB-R04 [NEW]



**Tebas Sense**  
STB-R02 [NEW]



**Corbel Grey Sense**  
STB-ST5 [NEW]



**Palatino Sense**  
STB-PC1



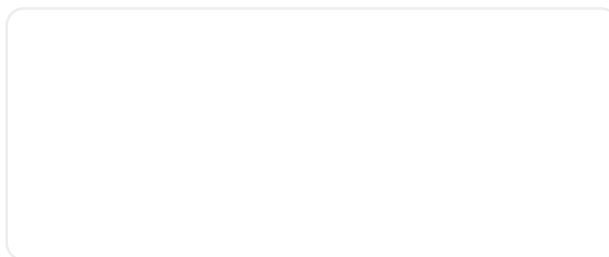
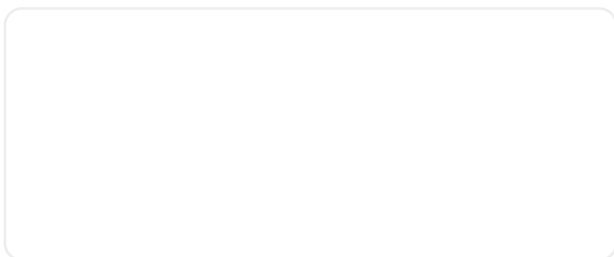
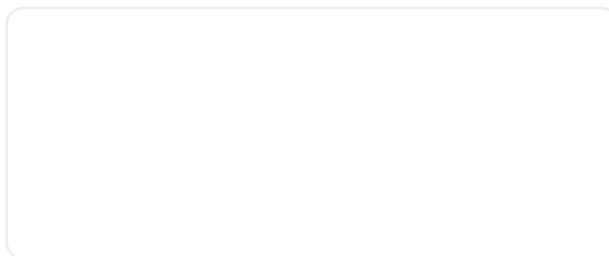
**Corbel Sense**  
STB-ST3



**Gallaecia Sense**  
STB-GR3

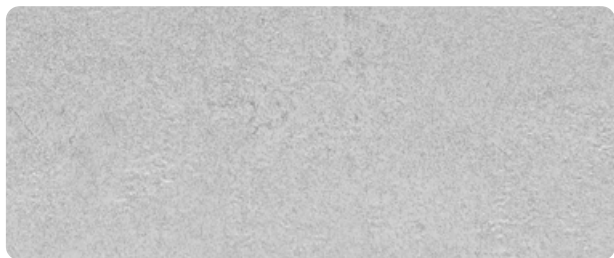


**Matte Travertine**  
STB-TR2



## Urban finishes

---



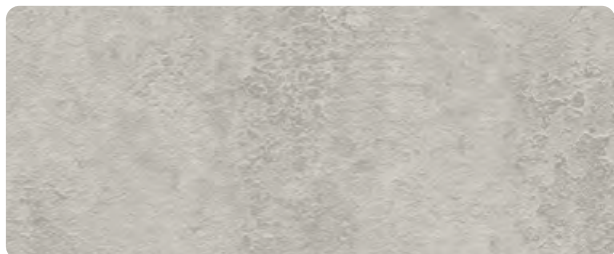
**Fresh Concrete Sense**

STB-H45 [NEW]



**Dry Concrete**

STB-H01



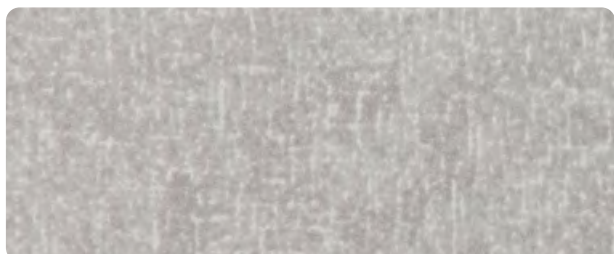
**Slate Concrete**

STB-H02



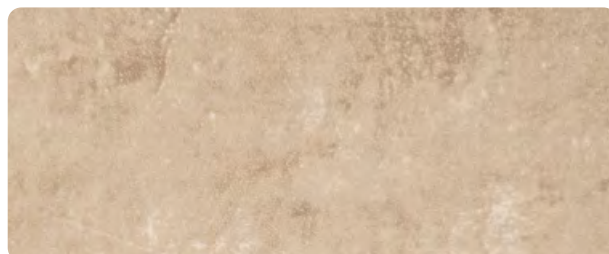
**Tromso Winter**

STB-P12



**Valante Grey**

STB-V01 [NEW]



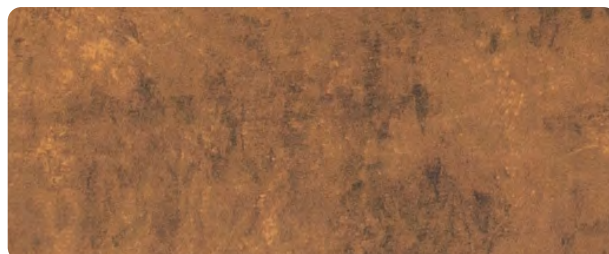
**Symphony Urban**

STB-P01



**Valante Blue**

STB-V03 [NEW]



**Namibia Ambar**

STB-P04



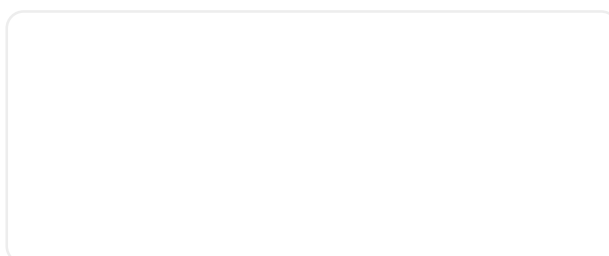
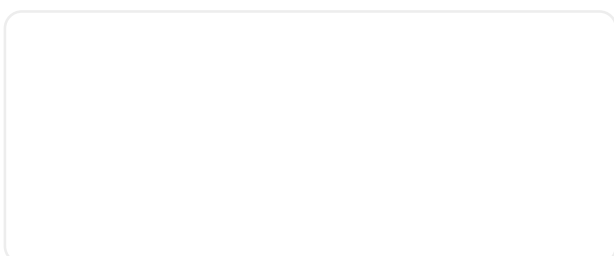
**Valante Red**

STB-V02 [NEW]

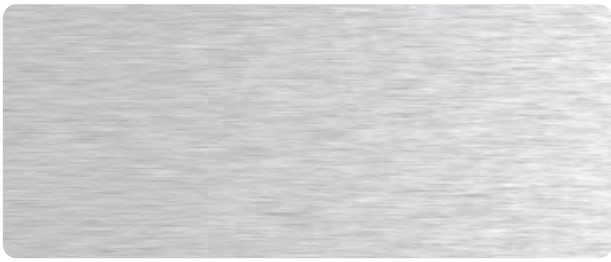


**Basalt Concrete**

STB-H03



## Urban finishes



**Natural Brushed**

STB-449



**Apollo Thin Brushed Metallic**

STB-B07 [NEW]



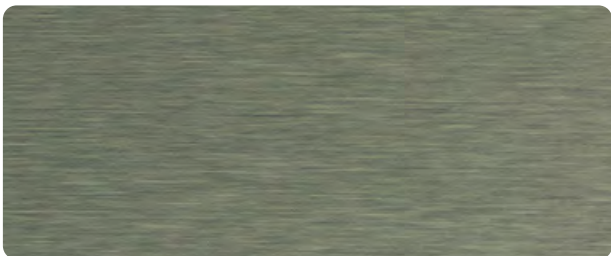
**Gold Brushed**

STB - 582 [NEW]



**Zinc Brushed**

STB-B06 [NEW]



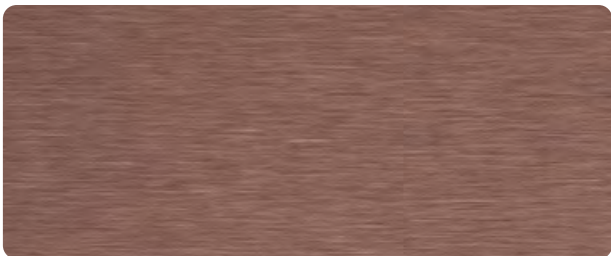
**Olive Brushed**

STB-584 [NEW]



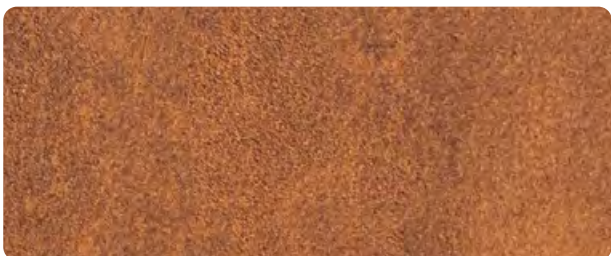
**Discovery Thin Brushed Metallic**

STB-B08 [NEW]



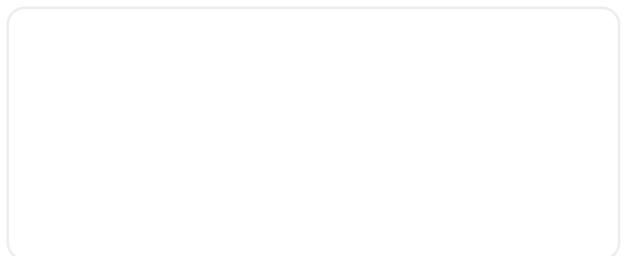
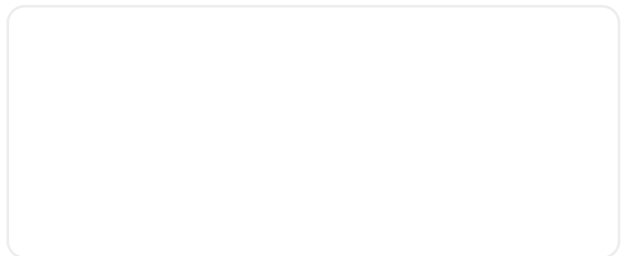
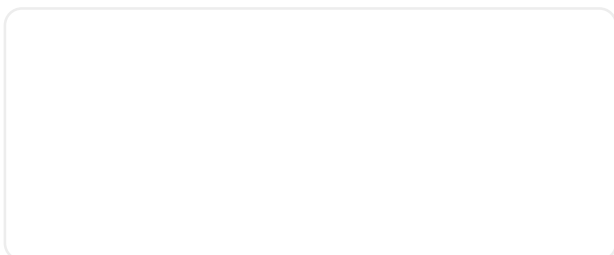
**Antique Copper Brushed**

STB - 583 [NEW]



**West Corten Sense**

STB- CT3



UPDATED  
STOCK LIST &  
COLOUR CHART



# STACBOND

more than you see

[stacbond.com](https://stacbond.com)

Eco Bierzo Composite S.L. | [info@stacbond.es](mailto:info@stacbond.es) | +34 987 553 117